

**ASBURY PLACE
KINGSPORT**

Colorful Living



Life is colorful here!

Feel the difference that comes from having more time to do what you're passionate about – and to discover more opportunities. Join a community where relaxation takes the place of responsibilities you'd rather not tend to. Enjoy a new level of well-being that comes as naturally as new friendships and new experiences.

Hop on the riverside Greenbelt Trail just a short walk from our campus or take a hike in nearby Bays Mountain State Park. Volunteer. Take in a fitness class, join friends for a movie in our theater, or watch the big game with a frosty beer in our Fireside Lounge.

Enjoy all the scenic views that come with our Bays Mountain backdrop coupled with the warm, family feeling that comes from a welcoming, sociable community.

Live life in color here at Asbury Place Kingsport.



Make yourself at home.

Make choices. That's what it means to be independent.

Dining, for example. Head to one of the region's many restaurants or enjoy tableside dinner service right on campus. Grab a salad with friends at The Bistro or invite old friends and new to a pot-luck in the Clubhouse. Dining at Asbury Place is as flexible as you are, and the choices are always yours.

And residential living? Again, your choice. Enjoy bright, open floor plans, crown molding, and your own finishing touches in a Villa. Or enjoy coffee and a beautiful Appalachian sunrise from the balcony of your one- or two-bedroom apartment.

Maintenance is provided, of course. Because who wouldn't rather spend their time choosing from enriching, entertaining activities – many created by the residents who bring fascinating experiences and backgrounds to Asbury Place and have helped make this community their own.

So go on. We'll take care of the chores, while you make yourself at home.



Life gets simpler—and much more rewarding.

Without home maintenance headaches, you now have the time to do what you want to do, not what you have to do. Find the pace that suits you and experience the expansion of opportunities and friendships that come with community living.

Get your fill of nature during a bike ride along the Holston River.

Keep your green thumb going by working with fellow residents in their Butterfly Garden or on your patio or deck. Gather for games, grilling, and drinks with friends in the Courtyard.

Our proximity to the Cherokee and Pisgah National Forests makes for enjoyable Sunday drives.

Stay closer to home and head to one of the many cultural and historic attractions in nearby Bristol, including the Birthplace of Country Music Museum.

Or saddle up for a ride on the historic Kingsport Carousel.

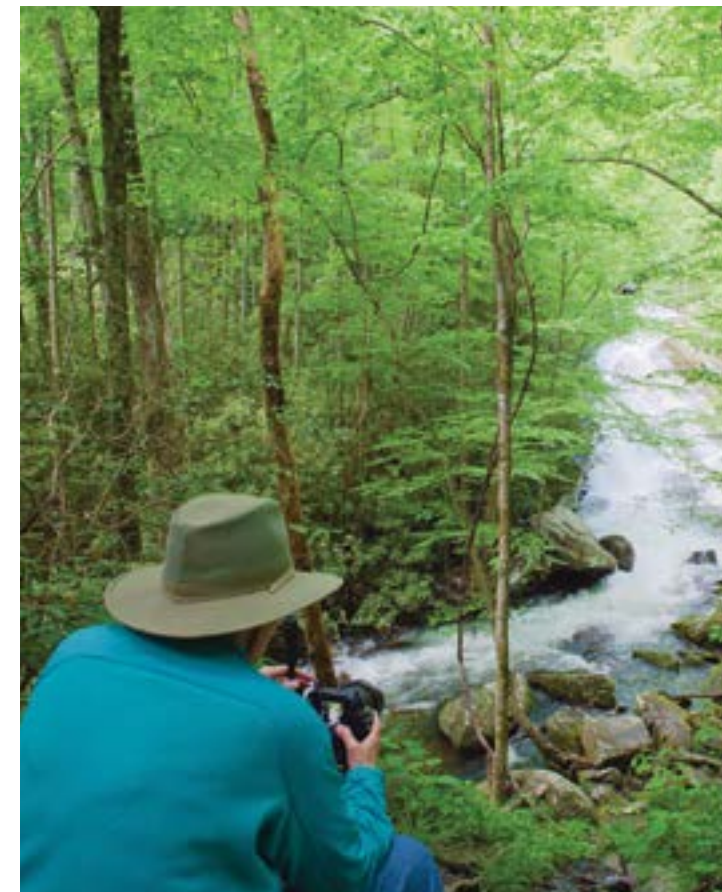


A Life Well Lived

Asbury Place Kingsport is designed with aging well in mind. Well-being informs everything we do – from classes focusing on flexibility, balance, and strength; social events and volunteer opportunities; to unique resident clubs and fascinating opportunities for continuing education with East Tennessee State University.

Studies continue to show the significant health benefits that come from staying social and active. Our cognitive, emotional, and physical health benefit when we have more opportunities to flex those ‘muscles.’

Planning for friendship and support as you age reduces stress and creates a healthier mind and body. Access to health services if needed is key to that peace of mind. Enjoy the active, purposeful lifestyle that comes from a community of engaged, like-minded people.

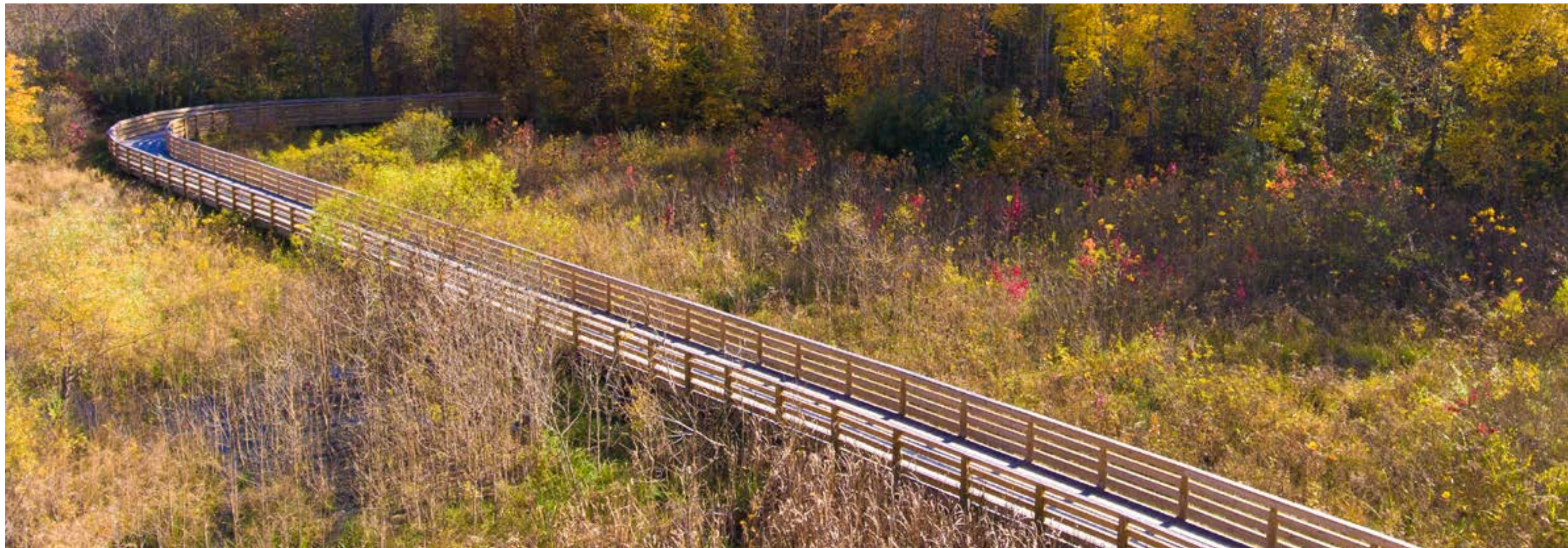


Content and confident, you're leaving ordinary life behind.

Nestled in the foothills of Bays Mountain, Asbury Place Kingsport's 10-acre campus offers a beautiful location that opens an exceptional range of possibilities for retirement living. We help support a lifetime of living well with access to services to meet future health care needs on campus and at nearby Steadman Hill:

- Assisted living
- Memory care
- Skilled nursing
- Short-term rehabilitation
- Home care services

It's a location offering pure contentment and an independent, active lifestyle that brings the peace of mind that comes from knowing you have a plan in place for the future. And that sets Asbury Place Kingsport apart from 55+ and other senior living options.



Glossary | Become familiar with the terminology of senior living.

A Legacy of Service

Asbury Place Kingsport was established in 1989, following its sister community Asbury Place Maryville, which was founded by members of the Holston Conference as Asbury Acres Home for the Aged in 1956.

While Asbury Place is proud of its faith heritage and values, we have intentionally evolved to be a community that welcomes people of all backgrounds, beliefs, cultures, and abilities. We honor our spiritual heritage by fostering a spirit to do all the good we can. The strength and spirit of our Appalachian heritage is mirrored in the pride our campus leadership, associates, and residents take in building a community spirit where we count on one another to do our best each and every day.

Call 866-691-4284 or visit [KingsportSeniorLiving.com](https://www.kingsportSeniorLiving.com) for more information.

Assisted Living. A special combination of housing, personalized supportive services and health care designed to meet the needs – both scheduled and unscheduled – of those who need help with daily living activities.

Continuum of Care. A reference to the health care and home care services available that support and supplement independent residents as they age or face health challenges.

Entrance Fee. The single, upfront payment that provides for residency in a CCRC and provides for ongoing campus maintenance and enhancements.

Independent Living. Residents live independently in an apartment or Villa with maintenance services provided by Asbury Place.

MSF or Monthly Service Fee. Determined by the size of the residence, this fee covers common costs associated with residency, including campus amenities, maintenance, utilities and emergency response.

Second-Person Fee. With fee structures built around single occupancy of a residence, two residents can expect a second-person fee to cover the additional costs associated with living here.

Services & Amenities. Lists of what the community provides that enhance the community living experience.

Skilled Nursing. 24-hour care for residents with acute needs. Residents usually rely on assistance for most or all daily living activities. Regular medical supervision.

Services & Amenities Included in Monthly Fee

- Maintenance and lawn care
- Property taxes
- Housekeeping services
- Fitness Center
- Community Lounge
- Library
- Transportation services available
- A range of wellness activities and programs
- Pendant system with emergency response
- Water, sewer, trash pick-up
- Apartments also include electric, gas, and basic cable
- Villas also include electric and gas

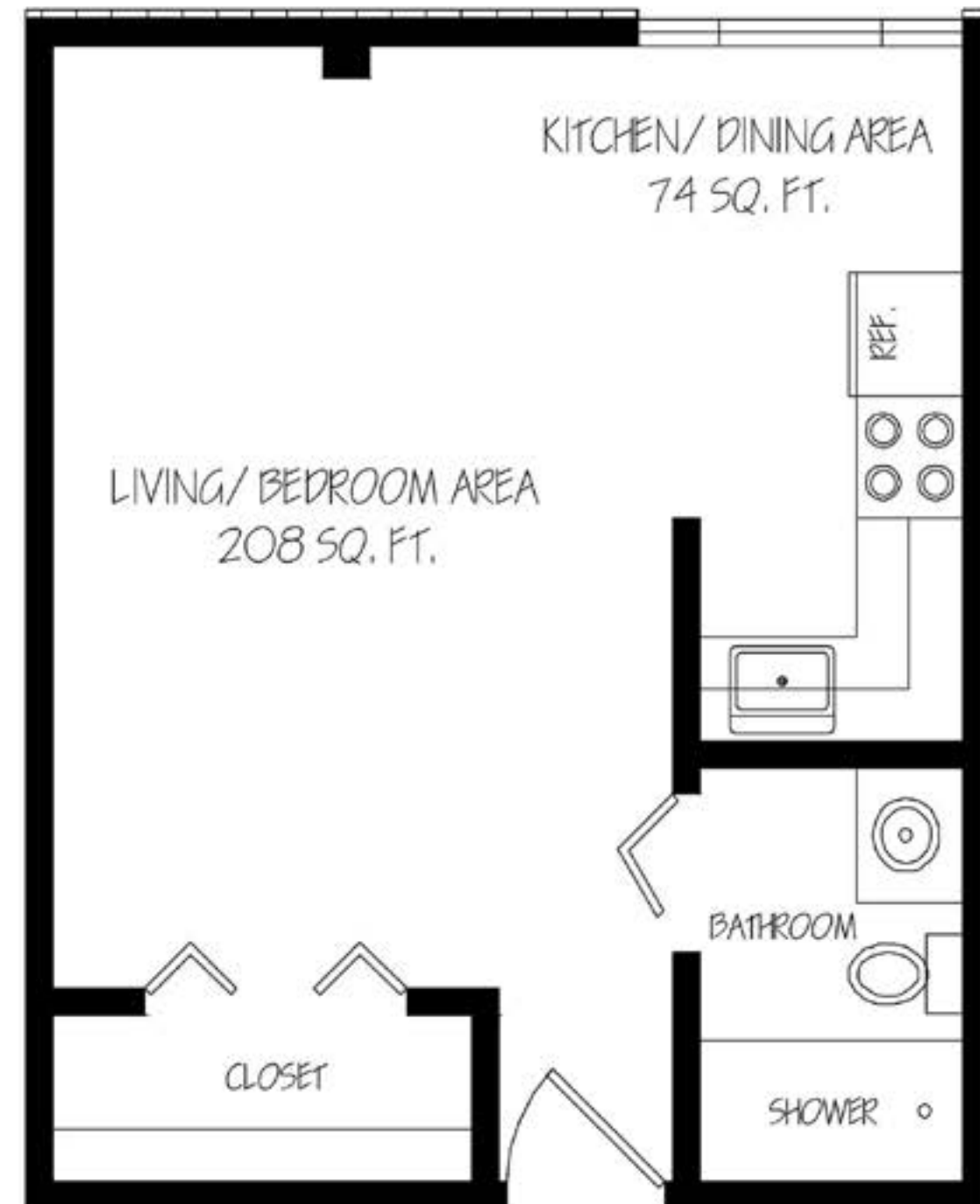
Entrance Fee Plans

Why charge an entrance fee? Even though your residence here is maintenance-free, the community is not. Entrance fees help provide capital funds for upkeep, enhancements, and the wide range of services, programs, and staff that a well-run community requires.

Standard Plan: Entrance fees are partially refundable during the first 60 months you live at Asbury Pace. The refund decreases by 1.667% each month of residency, until after 60 months, there is no refund. Because this plan offers the lowest entrance fees, it is the most affordable way to enjoy the Asbury Place lifestyle.

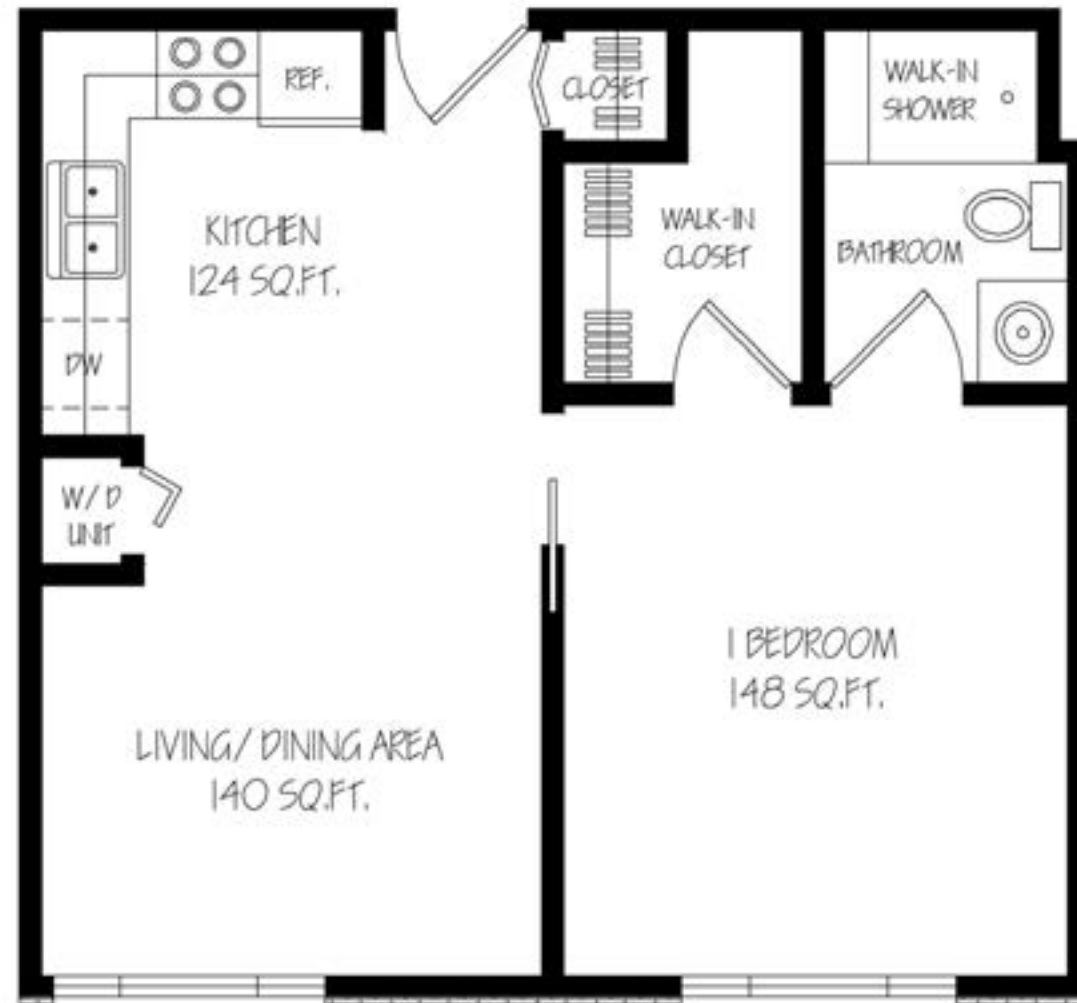
80% Refundable Plan: With this plan, you receive 80 percent of your entrance fee, payable to you or to your estate, at the time you are no longer a resident at Asbury Place and have satisfied the terms of the Residency Agreement.* The value of this choice is that you preserve your assets for the future in return for a larger up-front fee.

**Generally, the entrance fee is refunded when your residence is re-occupied by a resident who pays a new entrance fee. Specific terms are contained in the Residency Agreement.*



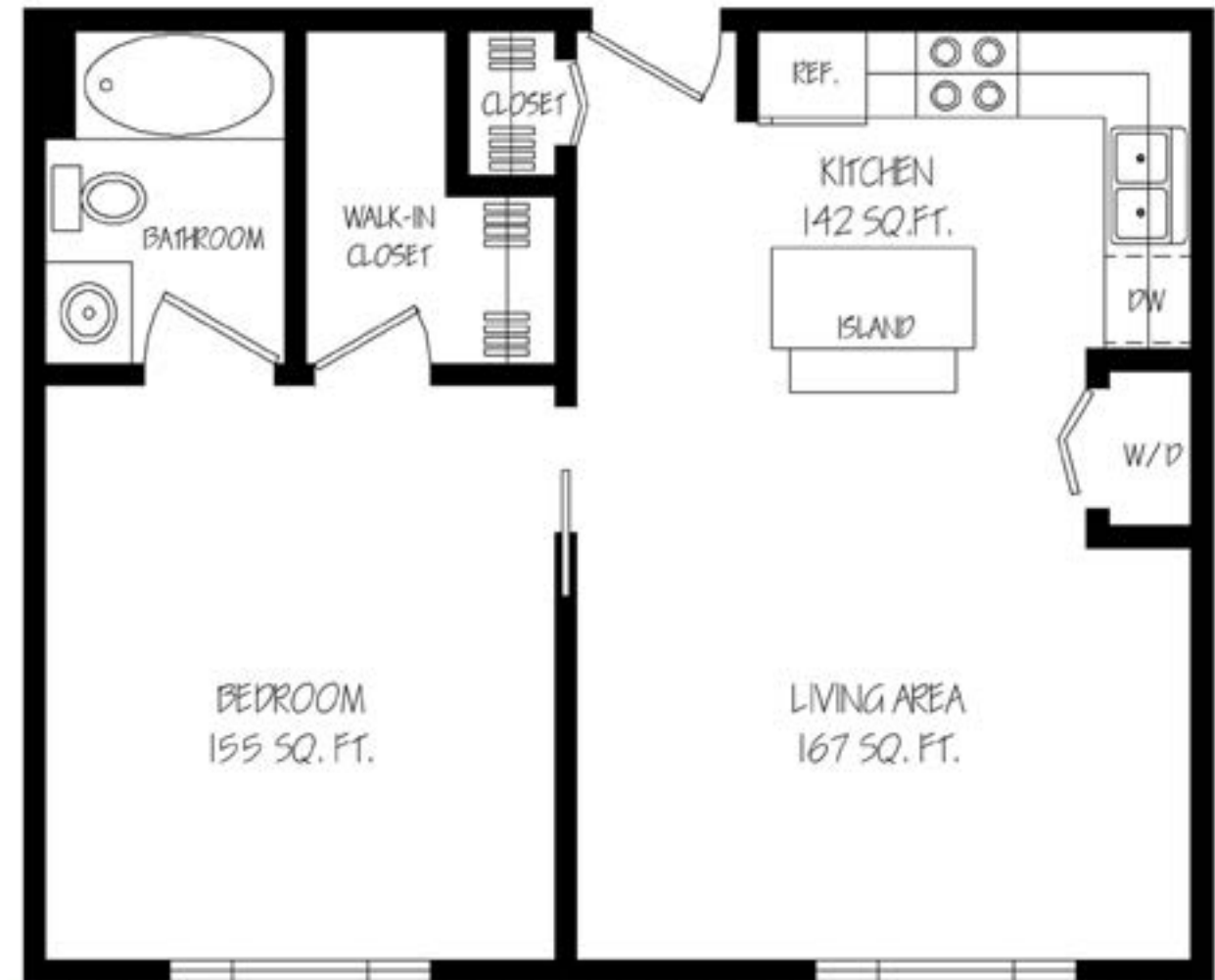
The Van Buren: 375 square feet

The Roosevelt



The Roosevelt: 497 square feet

The McKinnley: 566 square feet



The McKinnley

The Reagan



The Reagan: 663 square feet

The Lincoln 765 square feet



The Lincoln

The Adams

The Adams: 1,017 square feet



The Kennedy: 887 square feet

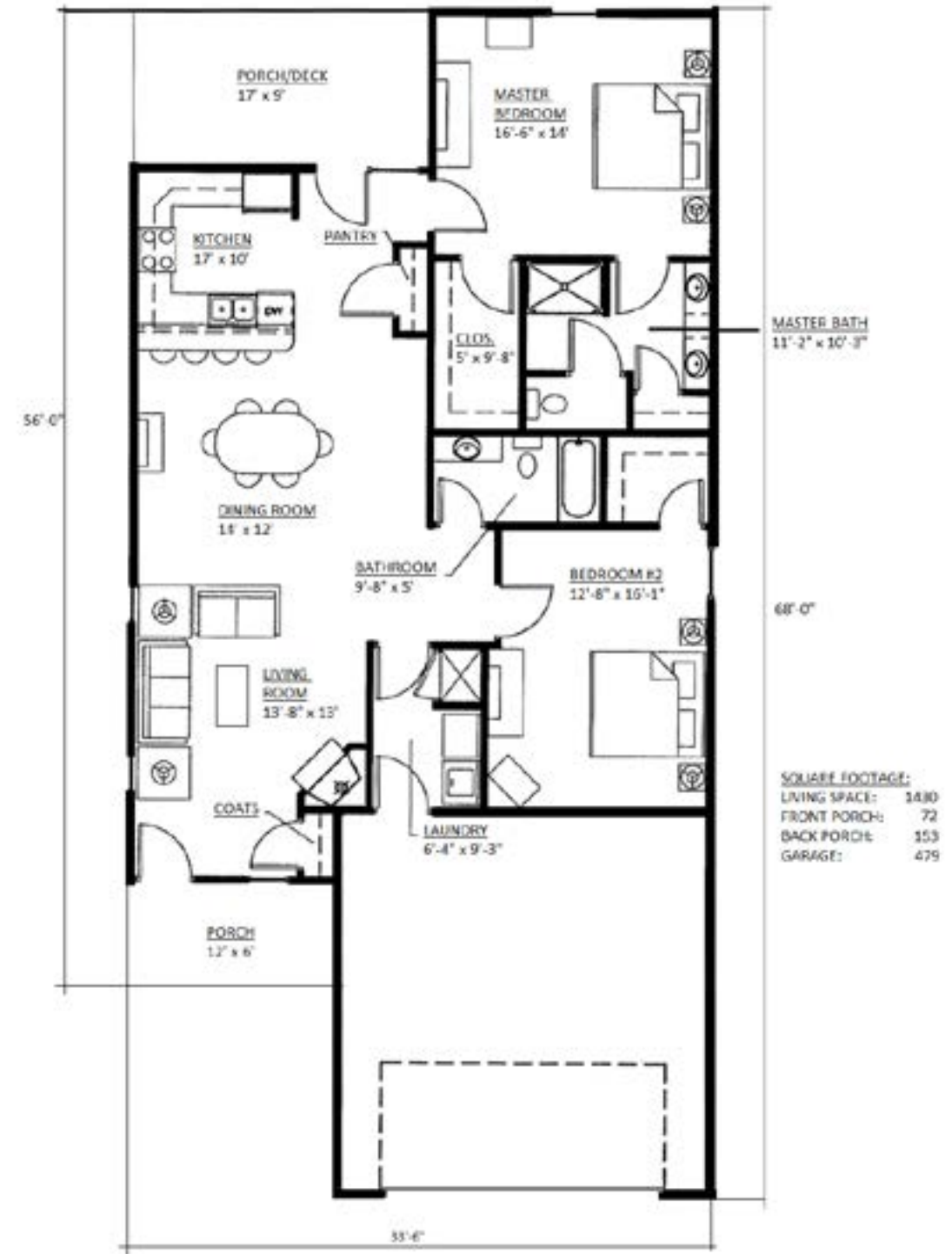
The Kennedy

The Washington



The Washington: 1,220 square feet

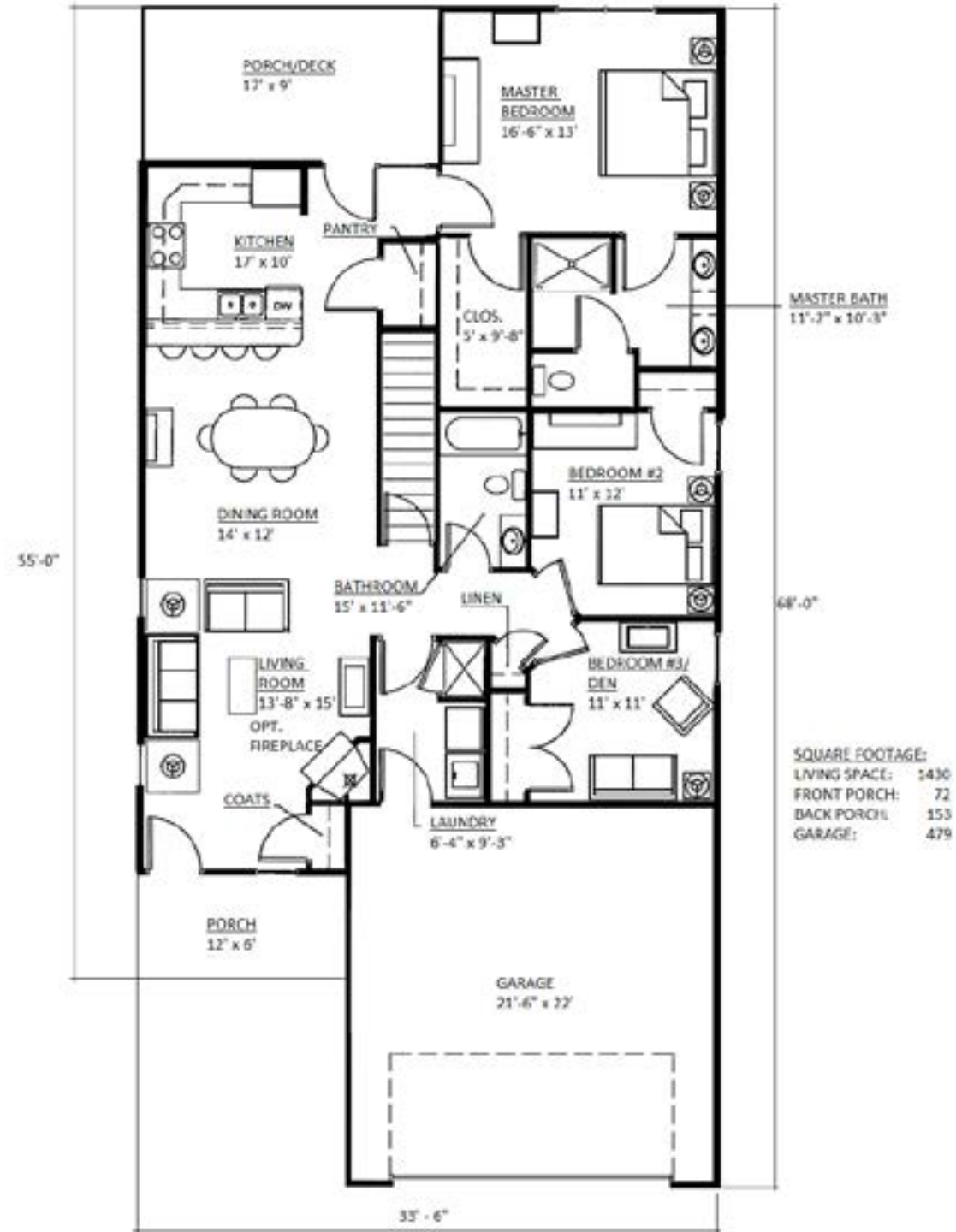
The Maple: 1,430 square feet



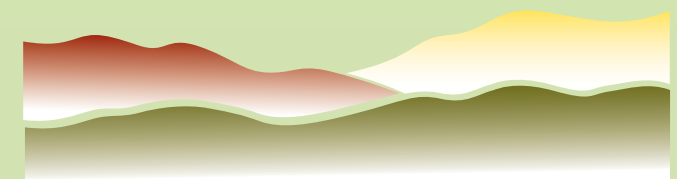
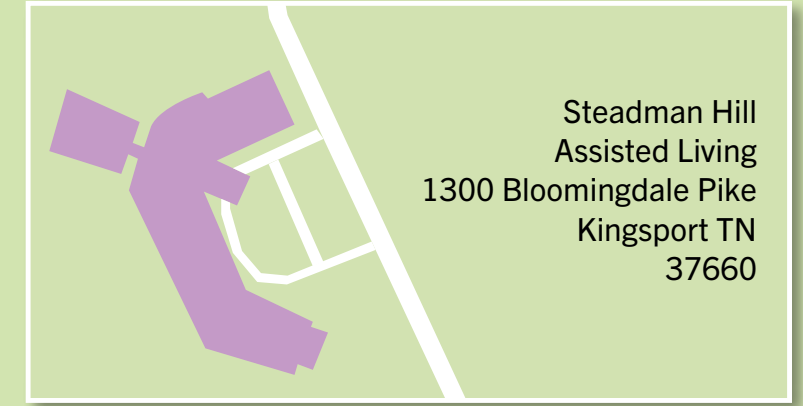
The Maple Villa

The Oak Villa

The Oak: 1,430 square feet



CAMPUS MAP



ASBURY PLACE
KINGSFORT

Colorful Living

100 Netherland Lane | Kingsport TN 37660



Asbury Place Kingsport

100 Netherland Lane
Kingsport, TN 37660

KingsportSeniorLiving.com

Marketing: (866) 691-4284

Main Reception: (423) 245-0360



**ASBURY PLACE
KINGSPORT**
Colorful Living